

# GEMS

## GÖRLITZ Energy Monitoring System

### Acquisition, display and management of load profile data

The liberalized energy market permits customers, whose energy consumption is measured in form of load profiles, to receive from the supplier their own energy data. In many cases the customer can receive in regular intervals his consumption data as E-Mail or can download them directly from a web page. In other cases the customer will be able to get direct access to his measuring instrument and retrieve the data from there.

GEMS is the best adapted tool, to consolidate these regular data and manage them in a data base.

The representation of the data can be made in tabular form, graphic form or as statistics. All types of representation have a printer interface and, for own complicated evaluations, an interface to Excel.

### Customer tool for EDW3000

GEMS is the ideal tool, to allow customers the local storage, management and display of load profile data, which where received from the WEB module of EDW3000. The used exchange format is absolutely compatible to the standard email dispatch of EDW3000, as it can be configured by an Internet customer over the Internet.

### Customer tool for Skalar

Measurement devices, which can be accessed by the FTP-features of the intelligent modem Skalar, can be used as primary data sources for GEMS. Depending on the configuration of Skalar the device can send the data independently to the customer or the customer can log into Skalar and retrieve the data automatically.

*We provide solutions*

## Technical data GEMS

GEMS is based on a industrial standard data base according to Microsoft Access format. This database stores all configuration and measurement data.

The standard license allows the simultaneous acquisition for 20 load profiles, in special cases the license may be adapted.

The data transfer for measurement data is done using FTP (File Transfer Protocol), a standard data transmission protocol of the internet world. For applications, where data are sent in by external applications or devices a FTP-Server is included in the delivery.

The installation is made by a Setup program, which can be influenced by the user. The configuration of the software is limited to a few screens to define the data collection parameters and the measurement load profiles.

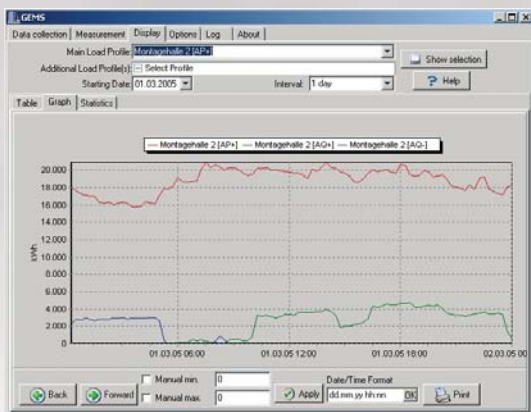
## Data display

Date can be displayed in several ways:

- As table, where a random number of load profile may be displayed simultaneously
- As statistic data for Minimum, Maximum or summation
- As line graph for several load profiles

Date/Time Stamp	Montagehalle 2 [AP+] / kWh	Montagehalle 2 [AG+] / kWh	Montagehalle 2 [AG-] / kWh
01.03.2005 00:15	18016,001	86	2289
01.03.2005 00:30	17636,999	0	2032
01.03.2005 00:45	17250	0	2772
01.03.2005 01:00	17104	0	2673
01.03.2005 01:15	17070	0	2605
01.03.2005 01:30	17021	0	2618
01.03.2005 01:45	16365,999	0	2844
01.03.2005 02:00	16208	0	2861
01.03.2005 02:15	16372,999	0	2848
01.03.2005 02:30	16094,999	0	2875
01.03.2005 02:45	16252,001	0	2811
01.03.2005 03:00	16374,001	0	2862
01.03.2005 03:15	16245,001	0	2855
01.03.2005 03:30	15909	0	2937
01.03.2005 03:45	15782	0	2940
01.03.2005 04:00	15856	0	2948

	Date/Time Stamp	Montagehalle 2 [AP+] / kWh	Date/Time Stamp	Montagehalle 2 [AG+] / kWh
Maximum	01.03.2005 14:00	20923	01.03.2005 18:30	4736
Minimum	01.03.2005 03:45	15782	01.03.2005 00:30	0
Sum		1804990,002		200211
Average		18608,1443505155		2064,03092783505
#Values		96		96



## Order Information

Order number  
660022000D

Subject to technical changes and modifications